



WELCOME

New Students

SLCC

SOUTH LOUISIANA COMMUNITY COLLEGE



nationalemssacademy.com



Welcome to the National EMS Academy! We are excited that you will be joining our community. This guide was created to be a one-stop resource to help you navigate the enrollment process. If you have any questions, please reach out to a coordinator. The points below are a quick overview of the information inside this packet.

Definitions of Common Terms

EMS - Emergency Medical Services, more commonly known as EMS, is a system that provides emergency medical care.

EMT - a medical technician certified to provide basic emergency services before and during transportation to a hospital.

Paramedic - a medical technician licensed to provide advanced emergency services before or during transportation to a hospital.

Contents

EMT Overview

Start here to learn about the EMT program.

EMT Student Requirements

The qualifications and prerequisites needed.

EMT Hybrid Course Delivery

Information on hybrid learning, our combined online and in-class program.

Financial Information, Aid, & Options

Tuition costs and resources for financial aid.

Enrollment and Registration Guide

A step-by-step tutorial and important dates.

Orientation

One orientation session is a mandatory requirement for all students.

Contact Information

If at any time you need help, please send us your questions!



What is EMS?



Emergency Medical Services

More commonly known as EMS, it is a system that provides emergency medical care.

This system is comprised of coordinated response and emergency medical care, involving multiple people, agencies, and organizations.

The operation may be overseen by a private or public sector.



Two Programs: EMT and Paramedic

Both EMTs and paramedics have the knowledge and skills to transport patients and provide them with emergency care.

EMTs are medical technicians who are certified to provide basic emergency medical care.

Paramedics hold a technical diploma, paramedic certification, or associate's degree in addition to their EMT certification and are licensed to provide advanced emergency medical care.

Students must become an EMT before becoming a paramedic, but the EMT certification can be taken as part of the paramedic degree program.

About the Program



Emergency Medical Technician

Emergency Medical Technician (EMT) is a rewarding career where individuals are able to provide emergency health care services to members of the community. EMTs are clinicians that are trained to provide basic emergency medical care. EMTs may work in an ambulance, in a hospital, or in a fire department.



About the EMT Program

The Emergency Medical Technician (EMT) program is a one-semester program that takes approximately three months to complete. The program is broken into two classes; students must pass the first class before starting the second class. Once both classes are completed, students must pass the National Registry Exam (NREMT) to be recognized as an EMT for employment.

The EMT program is offered as a hybrid program where students engage in online content delivery for 10 hours per week, and students meet in a face-to-face class setting for 8 hours per week.

EMT: Student Requirements



Physical Job Demands

The following information can be used as a reference point to help determine whether individuals are capable of meeting their physical job demands.

Work Classification: Very Heavy (100+ lbs)

Average patient weight: 175-200 lbs

Average calls per day: 8-10

Average lifting/transporting volume per EMT: 2000-400 lbs over 12-24 hour shift

Physical Activity/Working Postures:

Crouching	Twisting	Lifting
Crawling	Pulling	Walking
Bending	Reaching	Pushing
Stooping	Carrying	Vision/Hearing
Kneeling	Squatting	Prolonged Sitting
Stairs	Balancing	Prolonged Driving

Environmental Requirements:

Extreme heat/cold/humidity
Elevated heights
Wet/Dry conditions
Noise - Over 85 dB
Confined/cramped spaces
Shift work (day and night)

Student Requirements

High School Diploma, GED, or HiSet.

Background affidavit.

Arrange transportation to all class days and clinical days.

Provide your own personal computer for online work and exams (no tablets or cellphones).

Adhere to all NEMSA and CLINICAL SITE policies.

Attain a minimum of 75% (grade of C) in all classes.

Must be 16 years old to take the class.

Must be 18 to sit for the National Registry Exam.

Must provide a physician's statement verifying your ability to complete the duties of an EMT.

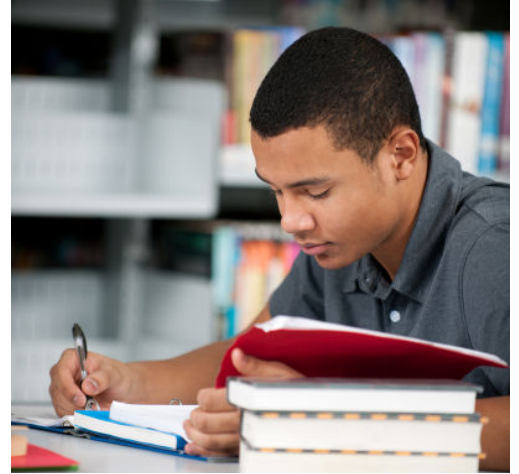
Attend two 12-hour clinical shifts in an ambulance with a preceptor and patient interactions

Computer requirements

All students will be required to have a computer with a webcam used for classwork and taking exams. For exams, you must install Respondus LockDown Browser on your Chromebook, Windows, or Mac Computer.

Important: Exams cannot be taken on Tablets, iPads, Surface Pro, Kindles, or smartphones.

EMT: Student Requirements (continued)



CPR Certification

Must obtain provider-level CPR certification before starting EMT classes.

American Heart Association

BLS/healthcare provider

Training can be obtained through NEMSA at a discounted rate of \$55.00 if you sign up for class and reserve your seat. Information on this process is given at orientation.

American Red Cross

CPR for the professional rescuer

There are only TWO CPR courses recognized by NEMSA and the Louisiana Bureau of EMS.

>> Beware of imitation courses!

Student Requirements

Must complete a criminal background affidavit.

If YES is an answer to any question, the individual must be cleared by the EMS Commission before attending clinical time and becoming certified through the State of Louisiana.

>> Any unresolved affidavit questions may delay or prevent an individual from testing for the National Registry.

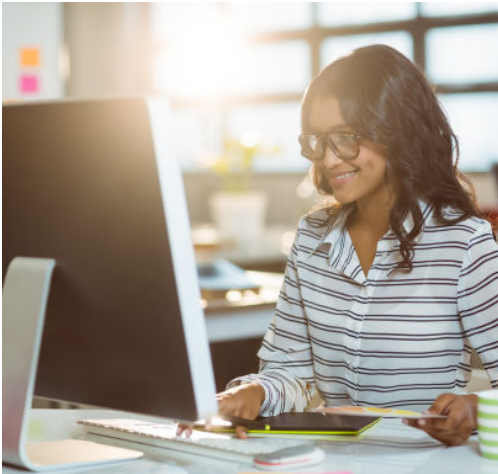
If you have any questions, you may contact the Louisiana Bureau of EMS at 225-925-4022

Cannot previously be dismissed from another EMS training program for any reason within the last two years, except for academic failure.

Having a suspected criminal background can prevent certification as an EMT or paramedic in the State of Louisiana.

Louisiana law may prevent EMS providers from hiring or testing anyone with a certain criminal conviction.

Steps to Enrollment



Information Packet

Review the LA EMT Course packet for current course requirements and enrollment processes.

Apply for EMT Class

Apply for the EMT Course through SLCC through the LA-Registration button on the becomeamedic.com page. After the submission, students will receive communication via email, when their application is complete and are fully admitted to SLCC. Students should monitor their email and spam for updates.

Register for Class

Once information regarding advising and class registration has been received, follow the video instructions and add the course registration numbers to the class schedule. Registration should be completed on a computer, not a mobile device.

Once classes are added, tuition amounts will be visible in the registration system.

Financial Obligation of the Program

Once classes are registered, financial responsibility is now assumed by the student for those classes. Tuition will be paid in the class registration system through SLCC. Students have access to payment plans and options for financial assistance.

Tuition is \$1,987.00

www.solacc.edu/students/paying-for-college/student-accounts/tuition-fees.

Payment plan options can be selected through the class registration system.

<https://www.solacc.edu/students/paying-for-college/student-accounts/payment-plans>.



Enrollment Steps (cont.)

Financial Obligation of the Program

Workforce Innovation and Opportunity (WIOA) is an option for financial assistance. There are many factors that contribute to whether or not a participant would receive funding. Students must contact the local business and career solutions center to submit an application. Call 1-844-385-1919 to connect to any parish.

Kent Richard with the SLCC Corporate College may be able to answer some questions. His email is Kent.Richard@solacc.edu.

MJ Foster Promise Program is another option for financial assistance. Follow the link below to find out more about applying for this assistance.

Acadian Scholarships - Scholarships may be offered to some High School Graduates and College students. Please contact Shelby LaBuff Proctor at Shelby.LaBuff@acadian.com for more information.

Students will not receive a 1098-T form NEMSA for taxes.

Helpful Links

www2.laworks.net/Downloads/WFD/AJC_Contacts.pdf

www2.laworks.net/servicelocator.asp

www.solacc.edu/admissions/mj-foster-promise

EMT Orientation

SLCC will provide student registration information to NEMSA. NEMSA will send communication via email providing information on how to login into their NEMSA student portal and how to select an orientation date.

The instructor will assist the students with the required orientation paperwork, gaining access to the hybrid EMT course technology, and providing information on uniforms and other requirements for the EMT class. It is recommended that you bring a laptop to orientation and dress is casual.



Additional Program Information



Questions should be addressed with your site instructor. This information is usually covered during orientation. Typically that information includes:

- Curriculum
- Class dates and times
- Books and Materials
- Sites and locations
- Other course specifics

Additional Costs

- Textbooks - \$115.00
- Uniforms - \$200.00
- Medical supplies - \$100.00
- CPR provider level certification - \$55.00
- Physical exam
- EMT state exam fee - \$125.00
- NREMT exam fee - \$98.00
- State certification fee - \$35.00

Contact Us



Alexandria

Jessica Hirtzler

Jessica.Hirtzler@acadian.com

Baton Rouge

Justin Antarikananda

Justin.Antarikananda@acadian.com

Covington

Megan Corbett

Megan.Corbett@acadian.com

Houma

Tamira Kennedy

Tamira.Kennedy@acadian.com

Lafayette

Cameron Comeaux

Cameron.Comeaux@acadian.com

Lake Charles

Walter Siefford

Wsiefford@acadian.com

New Orleans

Maddi Bell

Madelyn.Clesi@acadian.com

SLCC

Kent Richard

Workforce Training Coordinator

SLCC/NEMSA Student Advisor

kent.richard@solacc.edu

SLCCTM

SOUTH LOUISIANA COMMUNITY COLLEGE



NATIONAL
EMS
ACADEMY
AN **Acadian** COMPANY